



Sugarloaf Ski Club

NEWS

Published on the Mountain • Carrabassett Valley • Maine • February 2019

What's Inside

- 2 • Ski Club Events
 - Snowball
- 3 • McKay/Waddle Race
- 4 • Dick Bell Chapel 50
- 5 • Sugarloaf Golf Classic
- 6 • CVA Raffle
- 7 • Ski Museum Event
- 8 • Sugarloaf Alpine Champs coming
- 9 • Boomaugers
- 10 • The Bag's 50
- 12 • CVA Moguls
- 13 • Homegrown
- 14 • WinterKids
- 16 • Maine Huts News
- 18 • Sam Morse update

Sugarloaf Mountain Ski Club Officers

President - Ginny Bousum
Treasurer - Phil Hunter
Executive Director/
Secretary - Bruce Miles

Board of Directors:

Steve Arner
Venise Fournier
Jon Hellstedt
Tom Hildreth
Nancy Holliday
Kim Kearing
Rick Ray
Peter Smith
Lev Steeves
Joyce Tobias
Joe Tutlis
Peter Van Alstine
Patrick Willihan
Jim McCormack - SMC
Kate Punderson - CVA

Ski Club Members:
Approx. 1,500

President's Message

Ginny Bousum



This year, 61 local kids were able to participate in the Boomaugers program at Sugarloaf. The ski club's King's Kids Fund underwrites 70 percent of the cost of this program.

The other day, I had a nice chat while riding on the SuperQuad with a total stranger, a pleasant young fellow, and after the usual "What a day!" and "Isn't this snow wonderful!" comments, he told me that Sugarloaf is his favorite place to ski. "It has a special feel, a community vibe," he told me. Of course I agreed with him. Then he further explained that he and his wife are self-employed and hope to work from Sugarloaf one day. When I told him I moved here almost 50 years ago, he told me I was lucky. Later I thought about how lucky we are indeed

to belong to this community and enjoy all that Sugarloaf has to offer. And of course that led my thoughts to the Sugarloaf Ski Club, where membership and camaraderie have long brought Sugarloafers together to share favorite activities both on and off the hill.

This year, as a new 501(c)(3) non-profit organization, the Sugarloaf Ski Club's board of directors has accepted a challenge to raise money for an endowment fund. The Ski Club must raise a minimum \$250,000 by December of 2021 to match a \$500,000 gift from the H. King and

Jean Cummings Charitable Fund. Our plan is to grow this fund to over one million dollars in the future.

There are many worthy causes asking for support, so it is particularly heartwarming to know that our membership, committed to the club's mission "... to provide the opportunity for all youth to participate and excel in skiing and snowboarding ...", has stepped up to the challenge and to date, pledges and payments for the endowment fund have totaled over \$160,000. However, as we have learned from experience, the last dollars are

Continued on page 13

2018-19 Ski Club Events Calendar

For events info check www.sugarloafskiclub.org
or email questions to info@sugarloafskiclub.com

February

February 16
John Christie Heritage
Classic
Ski Museum of Maine
Shipyard - Noon to 6pm

February 18
McKay / Waddle
Ski Race

February 23
CVA Big Raffle
Bill & Joan Alford
Competition Center

March

March 1-2
7th Annual
WinterKids Downhill 24
9am Fri. to 9am Sat.

March 16-21
U S Alpine National
Championships
Narrow Gauge

March 23
Annual SnowBall
Dinner/Dance
With "Elmore Twist"
King Pine Room

June

June 28
Annual Ski Club Golf
Tournament
Sugarloaf Golf Club

June 29
Kingfield POPS

Annual SnowBall is on March 23



*Ski Club member Charlie Copeland adds to the evening
with his rendition of Mustang Sally.*

The annual Sugarloaf Ski Club SnowBall will be held on Saturday, March 23rd. This annual event takes place in the King Pine Room and consists of a cocktail hour, buffet dinner, and dancing to the Elmore Twist Rock & Roll band. There will also be a silent auction and a historical slide show during the cocktail hour. The theme of the evening will be "Swing into Spring".

The cost of this great evening is only \$55 per person, and the proceeds from the event help support the Sugarloaf Ski Club's scholarship programs. This year the Sugarloaf Ski Club has budgeted \$57,000 to be awarded to over 120 youngsters throughout Somerset & Franklin counties.

**Yes, I would like to be a member of
the Sugarloaf Ski Club!**



Name: _____ Address: _____

City: _____ State: _____ Zip: _____ Email: _____

() Individual \$30 () Couple \$50 () Family \$60 () This is a renewal. I've been a member since: _____

Please make checks out to: Sugarloaf Ski Club, • 9008 Main Street • Carrabassett Valley, Maine 04947
Or join at our online website store at sugarloafskiclub.com

The McKay/ Waddle Race will be held Feb. 18

The annual Dan McKay / Mike Waddle Scholarship Race will be held on Monday, February 18. The race will be a Dual Giant Slalom. The \$25 entry fee includes a t-shirt and BBQ (weather permitting), and there will be many randomly drawn prizes, as well as awards. This photo was taken in the early 80's.



*An independent insurance
agency that works for you.*



Call Jim today for a review
of your current insurance
207-235-2642

Jim Wilson • Branch Manager
Carrabassett Valley, Maine
Jim Harrison • CIC

Richard H. Bell Interfaith Chapel at Sugarloaf Mountain Marks 50th Anniversary

It has been 50 years since a ski-in, ski-out interfaith chapel was constructed on Sugarloaf Mountain.

Local businessman Richard Bell led the way. Thirty years ago, in 1988, his daughter Elizabeth “Buffy” Bell wrote, “The chapel was founded by a man who knew no difference in race, creed or faith.” She said her father “felt that visitors should have a spiritual place to go when they were away from home. We are committed to that purpose and to assist with the needs of the growing population of full-time residents within the area.”

fulfilled its mission, housing programs that serve people from birth to the end of life and providing a place of comfort or celebration for meaningful events that take place in the lives of people who reside or vacation in this mountain community.

The Sugarloaf Area Christian Ministry, founded in 1982, offers worship services every Sunday throughout the year, and provides year-round spiritual and counseling services. A Roman Catholic mass is held on Saturday afternoons throughout the ski season.



of the chapel, the Sugarloaf Ski Patrol provides emergency medical aid and comfort for injured skiers and their families from a walk-in and ski-in clinic.

And, year-round, christenings, weddings and memorial services are held at this historic location.

a nonprofit organization, owns the land on which it is located, and is overseen by an eight-member board. Plans now call for a renewal and restoration of the chapel to help meet the needs of the community for the next 50 years. For further information, please call (207) 242-4046.

Since then, the chapel has

Located in the basement

The chapel was formed as

C.O. BECK

Custom Metal Roofing for Fine Homes



Visit us on the web or call for more information about our quality, lifetime and maintenance-free standing seam metal roofs.

Serving Maine homeowners since 1920
C.O. BECK & SONS INC
ROOFING & SHEET METAL

207.872.5861 • WATERVILLE, ME • www.cobeckroofing.com

38th Annual Sugarloaf Ski Club Classic Golf Tournament to be held June 28th

Mark your calendars for the 38th Annual Sugarloaf Ski Club Classic Golf Tournament, which will take place on Friday, June 28th, at the Sugarloaf Golf Club. Ski Club board members Ginny Bousum and Patrick Willihan will again co-chair this important fundraising event for the Dick and Martha Ayotte Memorial Scholarship Fund.

The Bag and Kettle, a long-time Ski Club supporter, will be the site of a Thursday evening gathering where players can meet and greet, bid on silent auction items and enjoy

socializing before Friday's scramble-format tournament. Then on Saturday, June 29th, the Kingfield Pops concerts and fireworks will be held at the Kennedy Farm in Kingfield . . . Make a weekend out of it and do it all.

The purpose of the Dick and Martha Ayotte Scholarship Fund is to assist needful youngsters in the Sugarloaf region with the costs associated with their ski and snowboard training programs at Sugarloaf Mountain. The Sugarloaf Ski Club is a 501(c)(3) non-profit organization and has been supporting



Jim Bishop, Pat Willihan, Andrew Willihan and Roger (Duff) Doherty

ski training and educational programs for kids since 1950.

Sponsorship opportunities are available at several levels and in-kind gifts

for the silent auction are most welcomed. For more information, contact Bruce Miles at the Sugarloaf Ski Club; email: info@sugarloafskiclub.com.

MORONG FALMOUTH

*Bill and Peter Sowles are pleased to support
the Sugarloaf Ski Club*



www.morong.com • 1-800-356-4020

187 Route One, Falmouth, Maine 04105 • Sugarloafers since 1958

CARRABASSETT VALLEY ACADEMY

INVITES YOU TO THE

2019 SCHOLARSHIP BASH

RAFFLE & LIVE AUCTION



AT THE
BILL AND JOAN ALFOND
COMPETITION CENTER

FEBRUARY 23RD, 6-9 PM

\$10,000 CASH GRAND PRIZE

TASTY EATS & CASH BAR

PINE
CAPITAL

20
YEARS

BUY YOUR TICKET BEFORE 8PM ON FEBRUARY 20TH
FOR A CHANCE TO WIN THE \$1,000 EARLY BIRD DRAWING

BUY TICKETS ONLINE, OR AT THE FOLLOWING LOCATIONS:

THE BAG, SUGARLOAF COMPETITION CENTER, MOUNTAINSIDE REAL ESTATE, AGC, AND AYOTTES.

WWW.GOCVA.COM/RAFFLE

INFO: MELISSA FOGG | 207.237.4505 | MFOGG@GOCVA.COM

John Christy Heritage Classic February 16

Mark your calendars for February 16th – this will be a night to remember as we share a historical/entertainment program at the John Christie Heritage Classic. Our program will begin with a spotlight on the life of John Christie, followed by a segment “Early Sugarloaf Nightlife”. The stories will be entertaining for sure, with Kip Files as emcee and a panel made up of Don Fowler, Peter Roy, and Frank Rogers.

There will be a silent auction commencing at noon, then the “entertainment” program at 4:45 pm, with the live auction closing out the night. There are some great auction items – from Volkl RTM skis with Marker bindings, an early mid-week morning ski for 10 followed by breakfast at 45 North, plane rides, many unique decorative items and gift certificates. Something for Everyone – we look forward to seeing our Sugarloaf Ski Club friends at this fun event!

The museum is looking for volunteer docents! If you have a passion about skiing and are willing to volunteer one or two 2-hour weekend shifts per month – we could use your help! Contact: info@skimuseumofmaine.org for more information.



John Christie Heritage Classic February 16, 2019

History Program
“Early Sugarloaf Nightlife”



**FREE
ADMISSION**

Sugarloaf Inn
Silent Auction 12:00 pm to 4:45 pm
Cocktail Reception 4:00 pm to 6:00 pm
History Program 4:45 pm
Live Auction 5:30 pm




www.skimuseumofmaine.org
info@skimuseumofmaine.org
(207) 265-2023

MERRIAM VINEYARDS

Estate Grown Wines

*Russian River Valley
Sonoma County, California*

Cabernet Sauvignon • Merlot
Cabernet Franc • Pinot Noir
Sauvignon Blanc



*Award
Winning
Wines*

707-433-4032
11650 Los Amigos Road, Healdsburg • MerriamVineyards.com

Maine Veterinary Medical Center

**We treat
all your pet
emergencies
24/7, year
round,
weekends
and holidays.**



Our hospital is located
next to Scarborough
Downs in the
Enterprise Business
Park off Route One
in Scarborough.

**207.885.1290
mvmc.vet**

US Alpine Speed Championships

"We couldn't be prouder to host the first-ever U.S. Alpine Speed Championships Series at Sugarloaf," said Sugarloaf Director of Marketing Ethan Austin. "As the only homologated downhill course being used in the East, Sugarloaf has a long history as a proving ground for the world's fastest skiers. We're excited to see the nation's best test themselves on the world famous Narrow Gauge once again."

Sugarloaf, along with Carabassett Valley Academy, has long been a hotbed of ski racing and the development home of stars like Olympic champion Bode Miller and World Cham-

pionship medalist Kirsten Clark. Sugarloaf's proud racing heritage stems from years of hosting world class competitions. Since 1952 the mountain has staged many Junior Olympics and Eastern Cup (development level) events. In 1971, Sugarloaf held men's and women's World Cup races and in 1984 hosted the first official FIS Alpine Junior World Championships.

Racing will take place on Sugarloaf's legendary Narrow Gauge trail. It will be the seventh time Sugarloaf has played host to national championships following successful events in 1996, 1997, 2006, 2008, 2015

and 2017, but this will be the first official "U.S. Alpine Speed Championships" with downhill, super-G, and alpine combined events. The series will crown the Nor Am Downhill champions for the season as well as the US National Downhill, Super-G and Alpine Combined champions.



These Colby skiers competed in the 2015 US Alpine Nationals at Sugarloaf; l. to r.: Jean Barthold, Mardine Haskell and Sierra Leavitt.

US Alpine Nationals at Sugarloaf Event Schedule

March 16 – Downhill Training
March 17 – Downhill Training
March 18 – Downhill (NorAm Cup Finals)
March 19 – Downhill (National Champs.)
March 20 – Alpine Combined (National Champs.)
March 21 – Super-G (National Champs.)



HAPPY TUNES!!

Valley Crossing on Route 27 • Next to Tufulio's
7 miles South of the Access Road • 207-235-TUNE (8863)
Email: happy@skihappytunes.com

**TRY BEFORE
YOU BUY!**

**OVER 100
PAIRS OF
DEMO SKIS!!**

EXCEPTIONAL WINTERSTEIGER SKI & SNOWBOARD TUNING

Satisfaction guaranteed
Experience a Happy Tune and you WILL feel the difference.

HIGH PERFORMANCE DEMOS

Alpine: DYNASTAR, BLIZZARD, ROSSI, SALOMON, ELAN

CUSTOM BOOT-FITTING

By appointment; call 235-TUNE (8863)
Lange, Salomon, Tecnica, Black Diamond, Rossi,
Alpina, Dalbello, Scarpa, and Scott & Dale boot dealer

WIND-HOLD? NO WORRIES!

SKINS, TELE & AT Boots and BINDINGS from BlackDiamond, Scarpa, Scott, G3,
22Designs, Salomon, Dynafit, Marker, Fritschi & BCA

CVA athletes score well in recent events



Bill Bousam Alpine Race

Keegan Lathrop and Celia Geci were the winners of the annual Bill Bousam Alpine Race.

More Snowboard Cross Results:

2nd Place: CVA athlete Boden Gerry
3rd Place: CVA athlete Brady Harvie



Snowboard Cross Results:

1st Place: CVA Weekend Program athlete Amy Hatfield
2nd Place: CVA Weekend Program athlete,
Sasha Jansujwicz
3rd Place: CVA athlete Chloe Whipple





NORTHERN LIGHTS STOVE SHOP

30 Years Experience

**GAS & WOOD
STOVES
& PELLETS**

Rt. 2 & 4 • FARMINGTON • MAINE

Sales & Service

**INSULATED
CHIMNEY
Liners & Systems**

Your Full Service Ski Shop! Also On-Site at Titcomb Mountain!
Downhill & X-Country Skis & Accessories

Skis: **ROSSIGNOL** & **FISCHER**
Boots: **ROSSIGNOL** & **FISCHER**

GIRO Helmets
SWIX Clothing


TUBBS SNOWBOARDS


THULE
Car Rack Systems

**HearthStone** **HAMPTON** **MAJESTIC
VERMONT
Castings** **JÖTUL** **HARMAN** **REGENCY** **Rinnai.**

778-6566 • 1-800-789-6566

"When You Want It Done Right The First Time"

**HARMAN
STOVE** **JÖTUL**

The Bag's Big Five O

By Tom Hildreth

The Bag (and Kettle) is celebrating 50 years as an omnipresent pillar of the Sugarloaf community and a longtime supporter of the Sugarloaf Ski Club. My first job at Sugarloaf was at the Bag in 1970 when it was in Valley Crossing in downtown Carrabassett Valley. I wandered into the Bag that November, apparently at just the right time, and after a little beard scratching and mumbling, Bill Jones gave me a job for the winter as the night person.



Winter of 1969, Bill Jones tending bar at the Bag in the old Valley Crossing.

To say that Bill Jones is a character is to sell him short. He is an original and

a visionary. The Bag at the Valley Crossing was Bill Jones. Everything you see in the Village Center Bag is

Bill – the whole space, the lights, the brick pizza oven, the art, the funk, all the random “stuff.” And it sure

does work. As does the food and good cheer.

Working at the valley Bag



FRESH DOUGH
WOOD FIRED **PIZZA** BRICK OVEN

TROUT BROOK GOLD
Light Golding's Hops

PICK POLE PALE ALE
Copper, Malt and Hops

UNCLE'S WINTER ALE
Dark and Full Bodied

ALPINE RED RASPBERRY
Light n Fruity

THE BAG
BREW PUB
FOOD & DRINK
KETTLE
ALPINE ATTITUDE ALES

Our elevation at Sugarloaf raises us high above all other eastern micro breweries.
The clear, sparkling, mountain waters that we use to formulate Master Brewer P. Mulligan's exacting recipes give our patrons a brew experience both lofty & unique.
Would you expect anything less from
THE BAG & KETTLE
in our 43rd year

BREWS
Blue Monday
& BLUES

RED SNAPPER ALE
Bag's Tribute to Celtic-Style Red Ale

JOE STOUT
Creamy, Rich Stout, brewed with Carrabassett Coffee Espresso Beans

THE BAG'S POTATO ALE
Amber Ale, Strong and Malty

HALF PIPE PORTER
Dark, Robust and Malty

Mountain Brewed Ales from The BAG & KETTLE Brewing Company
On the Mountain at Sugarloaf/USA Village Center 237-2451

was very basic. Bill opened sometime during the day, and I came in at 5 after skiing all day. Bill and Alice (his dog) had a few beers and then went home to Trout Brook Farm in Eustis. I stayed until 11 or so and then wandered into the Stallion on the way back to my cold A-frame on the river.

The menu was simple: knockwurst and sauerkraut every night, soup of the day (sound familiar?), and beans and franks Saturday nights. I have never eaten another knockwurst after my two years at the Bag. Beverage was simple - a few different beers and Gallo wine on tap (plastic jugs hidden in the wall with gravity fed spigots). For the heavy hitters

the best I could do was Schaeffer and Guinness Stout 50/50.

The customers were the usual eclectic crew as now. Fowler and Keenan were regulars and a real pain

stalwart with daughter Kathy, and his \$2 tip was a big hit for this indigent sauerkraut slinger. On New Year's Eve, Strunk, Ayotte, Williamson, and N. Webber got into a good old fashioned scrum.

Menus expanded, wood fired pizza was added and beer was brewed, but the spirit has not changed as it continues under the stewardship of Pierre and Michelle.

The Valley Crossing complex was moved to the mountain in 1976 by three knuckleheads to become the Village West. Here's a good trivia question - name all the enterprises that were in the Bag's Valley Crossing space until 1976, and then all the enterprises (there were a lot) that were in that same space in the Village West (it's now The Sugarloafer Shop). Email your answer to info@sugarloafskiclub.com. The winner gets a \$25 gift card to the Bag!

Stan Leen was a Friday night stalwart with daughter Kathy, and his \$2 tip was a big hit for this indigent sauerkraut slinger.

in the butt. Jay Reynolds (head food man at the new Bag since 1972) was also a weekend regular, up from Nasson College. Stan Leen was a Friday night

Bill moved the Bag into its current space in the new Village Center in 1972, and grew erratically, exponentially, and sometimes underground.

Enjoy our Maine winter!

**Thinking of a second home near the slopes?
Give us a call and find out why everyone loves to
BANK with FRANK!**



Franklin Savings Bank



800-287-0752 - FranklinSavings.Bank
Farmington Rangeley River Valley Jay Ellsworth Skowhegan Wilton

CVA Moguls Program

CVA and CVA Weekend Program coaches and staff have worked tirelessly for the past 5 seasons to rebuild the CVA Mogul team. The athletes have continued to put forward incredible effort and make impressive progress since June's on-snow summer camp. Training extends to countless hours at the Water Ramp facilities and a full dry-land season, leading up to the competitive season.

The Killington Classic ECS mogul event was the start of their competitive journey. The team stayed close together as they embarked onto the scene. Their overall goal was to perform clean runs and learn from this new level of competitors. And that's just what they did! Three boys and two girls made the front page of results. CVA was represented by six Academy skiers and three CVA WP athletes.



CVA mogul athletes at Killington.



Chase Littlefield (left) placed 2nd in M13's.



Lance Dolan (right) placed 3rd in M15's.

Results:

Boys:

Myles McKenzie:
18th in singles

Lance Dolan:
19th in singles, 3rd place
M15's (pictured)

Colin Arner:
21st in singles

Chase Littlefield:
26th in singles, 2nd place
M13's (pictured)

Winston Gruelle:
51st in singles
Jake Egan: 57th in singles.

Girls:

Dory Michaud:
14th in singles

Arden Velenchik:
30th in singles

In Dual Moguls we had
Lance, Alex, Dory and Chase
all move on to round 3.

UBS Financial Services, Inc.



Anthony R. Jessen

First Vice President - Investments
Financial Advisor

One City Center, 7th Floor
Portland, ME 04101
Phone: 207-791-5112
Fax: 855-249-4228
Toll free: 800-388-8919
tony.jessen@ubs.com



Carrabassett Valley Academy Supports Homegrown Student-athletes in their Quest for Academic and Athletic Success

When you think of CVA, the small private academy dedicated to preparing middle- and high-school aged kids for success on the slopes and in the classroom, you may think of families driving hours to get to campus, through windswept wintery nights, and dropping their children off for months of focused training and academic rigor; and you wouldn't be completely wrong. But it isn't just these out-of-towners that make up the student-athlete population here in the valley.

In fact, each year a respectable contingent of local families make the commitment with their

young athletes to follow in the footsteps of other hometown heroes (Go Sam, go!) to pursue their dreams at their very own neighborhood ski and snowboard academy. And honestly, how many other small townships can boast such an opportunity right at their doorstep?

This year CVA welcomes an impressive group of 18 young student-athletes who got their start in MSAD 58 or at the Stratton school. Our local elementary and middle schools and Mount Abram High School have prepared these student-athletes well to be leaders in our caring community, in the classroom and on the

mountain.

Area residents should be proud of how this group represents our local communities. They are hardworking, kind, and talented student-athletes who are passionate about skiing, snowboarding, and the outdoors.

They will continue to grow in this community that has nurtured and produced some of our state's, and indeed the country's, most celebrated athletes. So, when you see them on the hill, say hello and maybe one day when they're atop the podium you'll be able to say, "Hey, I know that kid!"

President's Message

Continued from page 1

the most difficult to raise.

The endowment will generate funds to allow the creation of "King's Kids", an initiative to help kids in Franklin and Somerset counties be able to learn to ski and board. Last month the first of these programs, Sugarloaf's "Boomaugers", began. Over 60 local "King's Kids" are now skiing and riding weekly with Sugarloaf's Perfect Turn coaches . . . sixty kids! Our Ski Club put the cost within reach for families, and their kids will be able to enjoy ten afternoons on the snow. It has been motivating to see all those smiling faces on the mountain. And we can do more! The Ski Club Endowment Fund will assure that your donations will be secure, invested, and growing at the Maine Community Foundation. Your tax deductible donation now will, for years ahead, allow many Maine kids to participate in this sport that we are so lucky to enjoy.

The club's Executive Director, Bruce Miles, can provide more information and a pledge form when you are ready. He can be reached by email at ExecutiveDirector@sugarloafskiclub.com or by phone at (207) 237-6955. Or come chat with us at the Ski Club office in the Bill and Joan Alfond Competition Center between runs.

NAME	GRADE	DISCIPLINE	HOMETOWN
Cameron Arner	09	Freestyle Skiing: FreeRide	Carrabassett Valley
Colin Arner	11	Freestyle Skiing: Moguls	Carrabassett Valley
Lance Dolan	09	Freestyle Skiing: Moguls	Coplin
Emma Downing	12	Snowboarding: BX	Carrabassett Valley
Gracie Mae Fargo	08	Freestyle Skiing: FreeSki	Stratton
Caspian Fargo	11	Freestyle Skiing: FreeSki	Stratton
Elijah Fournier	09	Freestyle Skiing: FreeSki	Carrabassett Valley
Lyle Hering	08	Ski Cross	Kingfield
Leah Herridge	08	Backcountry	Stratton
Luke Kearing	11	U19/21 Alpine Men	Carrabassett Valley
Noah Koenig	09	Freestyle Skiing: FreeRide	Coplin
Myles Lynch	10	Snowboarding: Dev	Stratton
Myles McKenzie	09	Freestyle Skiing: Moguls	Kingfield
Natalie Pilsbury	11	Backcountry	Carrabassett Valley
Kagan Pilsbury	12	Freestyle Skiing: FreeSki	Carrabassett Valley
Nya Wolfe	08	U14 Alpine Women	Carrabassett Valley
ZacharyForrest-Woodman	07	Freestyle Skiing: FreeRide	Carrabassett Valley
Michael Martin	PG	Snowboarding: BX	Freeman Twp

7th Annual WinterKids Downhill 24 Returning to Sugarloaf March 1 & 2

There is still time to get your team together for The WinterKids Downhill 24, presented by Darling's Auto Group and Kittery Trading Post. The event will be held March 1 & 2.

The Downhill 24 is a team ski and snowboard challenge and fundraiser to benefit WinterKids. It is the only annual event that brings night skiing to Sugarloaf! WinterKids will set up lights along the course for a fun-filled, round-the-clock, family friendly event. Participants will raise money to support WinterKids to help children develop healthy lifelong habits through

education and fun, outdoor winter activity. Last year's event raised a record \$300,000 from 2,237 donors!

With the success of the Downhill 24 at Sugarloaf, it is a priority of WinterKids to ensure a portion of the raised funds directly supports kids and families in the Greater Carrabassett Valley area. For 2019, WinterKids has chosen the three elementary schools in MSAD 58 to receive \$4,000 each: Kingfield Elementary School, Phillips Elementary School, and Strong Elementary School.

Participants of the Winter-



Kids Downhill 24 get their own unique fundraising web page, and prizes are awarded for those who raise the most money for WinterKids.

To register your team and get event details visit www.D24.org

WinterKids will be needing volunteers as on-mountain support during the Downhill 24 event. If you are interested in supporting our event as a volunteer, please contact Events Manager Mary-Theresa Tringale at mtringale@winterkids.org for more information.



OWN A HOME IN THE WESTERN MAINE MOUNTAINS!

LEE BOONE
LOAN OFFICER

LBOONE@ACADIALENDING.COM
(207)491-0012
NMLS# 1631812

Acadia Lending Group NMLS ID #370636
www.acadialending.com

LOAN PROGRAMS

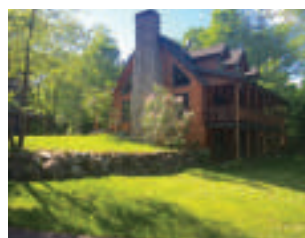
- FHA 3.5% DOWN
- USDA/RD NO MONEY DOWN FOR QUALIFYING AREAS
- VA LOANS
- CONVENTIONAL FINANCING 3% + 5% DOWN OPTIONS
- CONDOMINIUM FINANCING

CSM
Real Estate

Kim Kearing
Associate Broker
207-491-9703, kim@csmrealestate.com



My 18 years of living in Carrabassett Valley and on Sugarloaf Mountain will benefit those clients who are looking to buy or sell real estate in the area. If you are searching for a reliable, knowledgeable, local broker give me a call.



Iron Bridge \$352K
4bd., 2ba. 2 acres, 3 car garage



Village South, 2bd, 1ba





BIRCHWOOD INTERIORS

Furniture • Flooring • Window Treatments

Norwalk Sofa Sale

10% off February 15-28th, 2019



207-237-7000

Helping fast skiers sleep well since 1980

Village West at Sugarloaf • info@birchwoodinteriors.com

TRANSTEN'S



Main Street, Kingfield

We meet your grocery

A big selection of your favorite beer and wine beverages

Our qualified butchers will cut you a fresh steak, package our store-ground burger or de-bone our chicken for you.

Featuring all kinds of deli meats, cheeses, salads and fresh seafood

Talk to our deli staff about making up a party platter or fruit basket for your special occasion.

We also have a laundry facility

Open 7 days a week until 8:00 PM except Sundays (5:00 PM)
On Main Street • Route 27 in Kingfield • 207-265-2202



Bowling ~ Arcade ~ Golf
Serving Lunch and Dinner
Full Bar &
Upscale Pub Style Menu

1242 Carrabassett Dr.
Carrabassett Valley, ME 04947
207-235-3300



Always drink good coffee.

207.265.2326

www.carrabassettcoffee.com

Really good coffee from Kingfield, Maine



Maine Huts & Trails GMOW and February Vacation offerings

We're happy to take part in the Great Maine Outdoor Weekend (GMOW), a statewide event that will be occurring this year from February 8th-17th. GMOW is a coalition that aims at connecting families, friends, and neighbors with the natural world, promoting fun, physical activity, and good health. The Huts are offering an array of activities that will occur at 3 of our nearby eco-lodges during both weekends. A hot, locally sourced lunch and a variety of regional craft beers and wine will be available for purchase from 11:30 to 1:30. These activities are

perfect for outdoor enthusiasts of all ages and are a great introduction to our system.

During February Vacation (16th-24th), The Huts will be offering lunch and beverage services daily from 11:30 to 1:30. It's a great opportunity to take the whole family out for a day adventure into the surrounding mountains. Or, take the family on an over-night trip; our screen-free policy will allow the entire family to reconnect with each other, with others, and with the great outdoors.



Snowshoeing on Flagstaff Lake near the Flagstaff Hut.

Believe it or not, winter will be over before you know it! Soon, the snow will melt away, the birds will return, the trees will start to bud and the flowers will bloom; spring is right around the corner. This area is far more than just a winter destination; the Maine Lakes and Mountains region has it all! Whether it's hiking, mountain biking, golfing, bird watching, sightseeing, swimming, canoeing, kayaking, whitewater rafting,

or fishing – the area has a plethora of activities to satisfy the cravings of any outdoor enthusiast. When you stay at The Huts in March, enjoying all that is beautiful about the area during winter, you will save 50% on the price of your summer/fall adventure!

Explore our website maine-huts.org to learn more about the activities and offers coming your way soon. Happy Trails!



Sugarloaf's Official Real Estate Agency



Sam Punderson Deb Pierce Barb Larson Jeff Kennedy

sugarloafmountainside.com
207-237-2100 • realestate@sugarloaf.com

SLOPESIDE LIVING EXPERTS

Nobody knows the Sugarloaf area like
Mountainside Real Estate.

In the last year, our team has sold 12 times the volume of any other agency in Carrabassett Valley.

Our Full Service Agency Offers:

- Buyer Representation
- Seller Representation
- Hotel Quartershares
 - Seasonal Rentals
- All of our Properties are Listed in MLS
- Fully Staffed Office Open 7 Days a Week
- Visit us on Main Street in the Base Village

“Let us help you find your home at the Loaf.”



SUGARLOAF AREA GROCERS

*For all your Sugarloaf Area
Grocery needs since 1989*



Sugarloaf Groceries
on the mountain
237-2200

Mountainside Grocers
just before entrance to
Sugarloaf Access Road
237-2248

Anni's Market
Main Street Kingfield
265-2664

Ayottes Country Store
in the Valley
235-2443

John Beaupre "72" and Bob Thomas "82"
Proprietors



In partnership with Sugarloaf and others, UMF offers an exciting new **Alpine Operations Certificate** that offers real-world experience in the skiing and snowsports industry — including internships.

2017 U.S. News & World Report Ranking
#4 Top Public Regional Colleges-North
#5 Best Value School, Regional Colleges-North
#7 Top Regional Colleges-North (overall, public or private)

UNIVERSITY OF MAINE
FARMINGTON

sugarloafers Since 1976



Complete Ski Sales, Service, Rentals & Demos
Rte 4 & Riley Rd Jay, ME 207-897-5445 ski-depot.com

On The Europe Race Circuit with Chip & Sam

By Chip Cochrane

Hello Sugarloaf Ski Club. Just wanted to give you an update on my travels with Sam, and on his results. We have had four Europa Cup downhill races so far along with a couple FIS GS races. The first Europa Cup downhill was at Wengen, Switzerland on the infamous Lauberhorn course, minus the last grueling 30 seconds of the World Cup course. Sam finished a respectable 13th after a major mistake; he had been 3rd in training the day before. Next was the Europa Cup at Kitzbuhel on the original Hahnenkamm course except for the bottom section. Sam

finished an outstanding 7th! It was as gnarly as it has ever been!

Just today he raced two Europa Cup downhills at Chamonix, France. Sam had won the training run but ended up sixth and seventh in the races with a couple of small mistakes. A very tight race: he was just 8 tenths of a second off the fastest time. These are the best results he's had thus far, so Sam is on a good track, inching up on the world's best.

Now we're off to a couple of FIS super-G races and a training / rest stretch be-



Sam Morse and coach Chip Cochrane in Kitzbuhel, Austria.

fore the final Europa Cup speed series at Sarntal, Italy. We will finish up February 15, and fly home on the 16th. Sam will get a

World Cup downhill start in Norway early in March, then back home to Sugarloaf for the U S Alpine Speed Championships.

kw
KELLERWILLIAMS.
REALTY
207.879.9800

Why live anywhere else?

Faron D Fahy
REALTOR®
faron@kw.com
207.576.7039 cell
carrabassettrealestate.com



Regarding my position here, I'm the fill-in guy to replace Sam's original coach, who took on a coaching position at Utah State. The U.S. Ski Team could not find a full-time coach, so same and Sam's dad Earle recommended me; they all agreed before I knew anything about it! Sam felt comfortable with me since I coached him for five years at CVA, and a bit beyond up to when he made the U.S. Ski Team. When they asked me, I thought about it a few moments. I never really had aspirations to be a U.S. Ski Team coach, but I definitely wanted to help out Sam and his pursuit, so here I am. It had been several years since I had worked with Sam directly,

but had kept in touch with him.

Once I got over here and we got working together, it was just like old times! Biggest difference: Sam's maturity. I really am not doing all that much; he's in the driver's seat not only on his skis going down the hill but running his career. He has great support from U.S. Ski Team coaches: Peter Anderson, who is in charge of all the Europa Cup athletes, both technical and speed; Jessie Hunt, who's currently in charge of U.S. Ski Team operations from Park City; and many of the others who are over here in the trenches. We are traveling all over the European Alps, from Wengen,

Switzerland and Kitzbuhel, Austria and Chamonix, France, to Val Gardena, Italy; we travel with a van full of skis and gear, a car, and Sam's service guys Jessie and Zoran. Different team doctors rotate into the mix at different events, and occasionally an additional athlete or two join us either from the A-Team or development team.

Because of the particular track Sammy's on, he doesn't quite fit into the World Cup full time circuit yet; but there is no one else ready for Europa Cup DH either, so he's mostly on his own. We have been working in with the Norwegian and Canadian teams for course reports and video sharing.

There's lots of fantastic camaraderie between the teams of different countries on the Europa Cup circuit. It's pleasantly amazing . . . we are treated like royalty over here. Ski racing is so big, and ski areas and local vendors bend over backwards to give us training space, lodging, food and warm and welcoming hospitality!

There are days when I say I can't believe they're paying me to do this . . . and then there are other days when I say they're not paying me enough to do this! Other than missing the family, I could get used to spending the winter over here . . . ha-ha-ha!

emy

394 Main Street
Kingfield, ME 04947

fissports2012@gmail.com
207.265.5100



FIRST INLINE SKI & SPORT

Complete Racing Service • Pickup and Delivery Available

PROFESSIONAL SKI SERVICE • CUSTOM BOOT FITTING



Sugarloaf Ski Club NEWS

On the Mountain • 9008 Main Street
Carrabassett Valley, Maine 04947
www.sugarloafskiclub.com



Super-G skis on race day.

INSIDE: News about stuff that only Sugarloafers care about!

VALLEY GAS & OIL COMPANY

*Your complete energy source for
propane, kerosene, fuel oil and equipment*

1.800.675.7443 • 207.265.5443

Fax 207.265.2987 • www.valleygasandoil.com

*The Luce Family
Sugarloafers since 1952!*

P.O. Box 115 • 103 Main Street • Kingfield, Maine 04947